



Location Intelligence

Geographic Information Systems

MapInfo Pro™ v16

Access more data, gain richer insight and find the right answer with ease.

See it faster, solve it sooner.

People are looking to you for answers to expand networks, find prospects, plan for the future and eliminate risk. And they want those answers now. For every question, there's only one answer: the all-new MapInfo Pro™ desktop mapping and GIS solution.

The latest release of the world's premier mapping application just got simpler, faster and smarter. Enhanced in so many ways, the new MapInfo Pro software lets you visualise data and capitalise on those insights in less time than ever. It's never been easier to be more precise, productive and successful.

Visualise data your way, right away.

- Easy to learn, easy to use
- Flexible map displays
- Instant customisation
- Robust background maps
- Advanced analytics
- Smarter calculations

Locate success with the most intuitive mapping and GIS application.

Simpler functionality

- Most intuitive user experience yet
- Familiar ribbon-based navigation
- Quick-click drop down menus
- Rollover displays with instant feedback

Faster access to more data

- Richer insights from precise data
- On-demand access to global geocoding via the Pitney Bowes Commerce Cloud
- Ability to locate and geocode addresses and places in 140+ countries

Total compatibility

- Works with your existing IT systems and programmes
- Supports a wide range of today's most popular file formats including the latest OGC standards
- Share data with many third-party GIS and other systems

New in MapInfo Pro™ v16

Map a more successful future from start to finish.

- New interactive interface for thematic mapping
- Improved support for OGC standards, including WMTS support
- Faster, more intuitive Layout Designer
- On-demand access to global addresses and geocodes

Fewer clicks. More answers.

A new interactive interface for thematic mapping puts you in control. Modify and update maps directly from the ribbon. Instant feedback from gallery controls makes everything easier to learn and easier to use.

Total data compatibility.

Support for the latest OGC standards makes it easier for users to share maps and location data. Pitney Bowes' strong support for interoperability and open systems is enhanced with new standards, including:

- OGC Web Feature Service 2.0
- OGC Web Map Tile Service (WMTS)
- OGC GeoPackage

Your tables can now have up to 1,000 fields. Plus, an extended TAB file format eliminate the 2 GB file size limit. Using the GeoPackage data format, you can also share multiple sets of geospatial data in a single file, which can be used for collaboration and mobile applications.

Visualise in less time.

Improvements to the Layout Designer reduce the time it takes to create and improve the quality of cartographic map output. Now you can communicate map-based information and insights with greater speed and precision.

Turn insights into action.

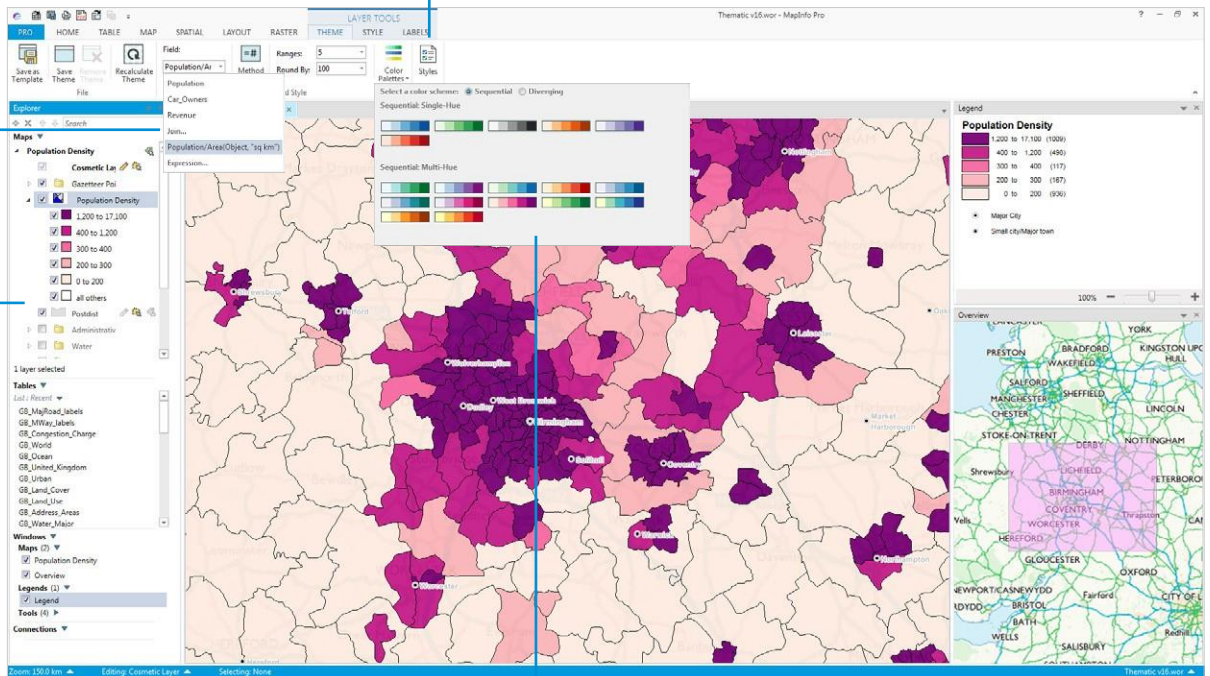
Designed for interoperability, you can easily integrate MapInfo Pro with your existing GIS and IT systems. You can also take advantage of a host of Pitney Bowes and Critchlow data products and services. Access geocodes or upload data to Spectrum Spatial Analyst right from MapInfo Pro.

Find the right answer with ease.

Easily visualise and analyse data with the new theme ribbon tab.

Change the column being mapped with a couple of clicks.

Interactive ranges now appear in the Layers list.



New color palettes.

New in MapInfo Pro™ Advanced v16

Know more by seeing more.

MapInfo Pro™ Advanced desktop GIS and mapping software is the world's most performant raster GIS solution for super-fast processing, visualisation and analysis of high resolution grid data. You can work at a continental or global scale, and easily share your analysis across your organisation.

The latest release takes performance further, with improved visualisation, analysis and productivity enhancements:

- Support for creating grids from multiple files (including LiDAR/LAS datasets)
- Additional capabilities in the powerful grid calculator
- New grid interpolation methods

Go big. Really big.

Create grid files from multiple files at once so you can efficiently process, visualise and analyse datasets on a continental or global scale.

Zoom in for details.

The new display resampling method enhances and smooths data when you zoom in beyond the base resolution of the source file. This ensures high quality appearance of the raster data even after you zoom in beyond the resolution of the individual pixels.

Power up your analysis.

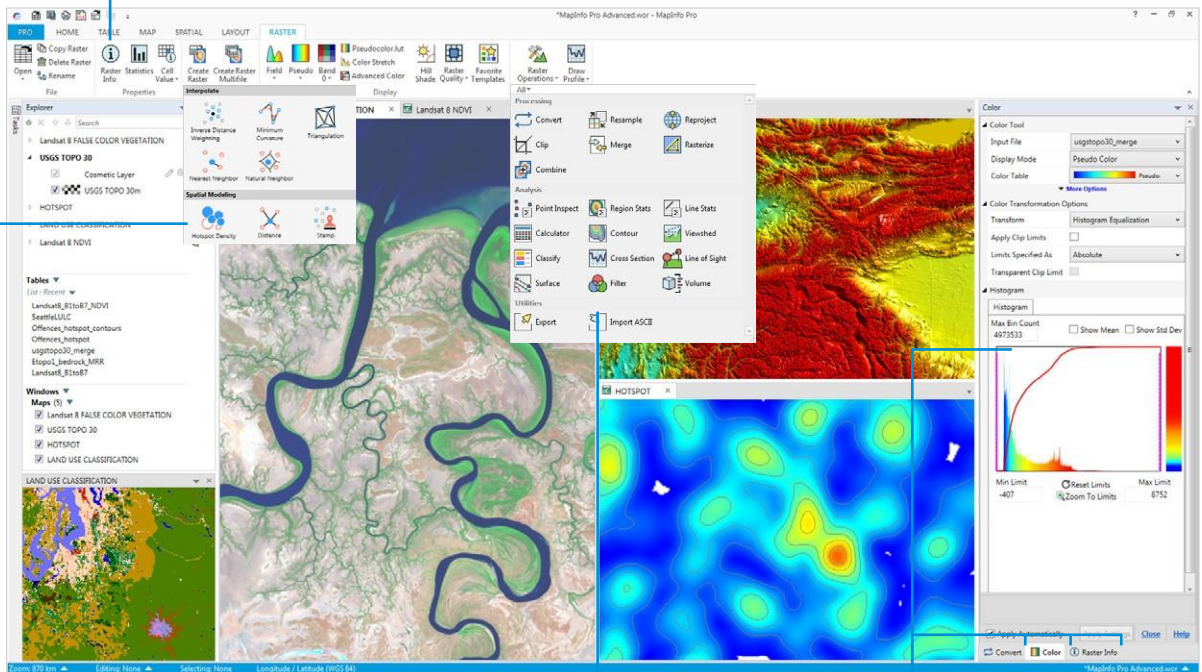
The improved operations include line-of-sight analysis, also known as point-to-point visibility. By taking into account terrain and elevation, you can understand whether a given point is visible from another point. This capability is especially valuable, for example, when assessing network connectivity in telecommunications.

Faster analysis of raster grid data.

Easy and intuitive to learn – a seamless addition to MapInfo Pro.

Information and statistics about your grid data at the click of a button.

Analyse your data with Hotspot maps and other grid types.



Powerful grid processing and analysis capabilities.

Core capabilities are accessed through easy to use panels.

Specifications

MapInfo Pro™ v16 and MapInfo Pro™ Advanced v16

Windows 7 (64-bit SP1)

Windows 8.1 (64-bit)

Windows 10 (64-bit)

Windows 2008 Server R2 (64-bit SP1 with XenServer 6.0)

Windows 2008 Server R2 (64-bit SP1)

Windows 2012 Server R2 (64-bit only)

Windows 2012 Server R2 (64-bit with XenApp 7.5)

Access a world of opportunity.

As part of the Pitney Bowes Location Intelligence suite, MapInfo Pro provides on-demand access to addresses and places around the world. You can even geocode a table of addresses and display them on your map with no need to purchase the reference dataset. Built-in geocoding capabilities include:

- Credits to use the geocoding service via the Pitney Bowes Commerce Cloud*
- Street-level geocoding in 140+ countries

* A monthly credits allocation is provided with initial purchase. Purchase additional credits by subscribing to one of our maintenance plans.



MapInfo Pro data access with Bing Maps (zoomed in).



MapInfo Pro territories displayed over Bing Maps.

Data compatibility.

Common PC files:

- Microsoft® Excel
- Access
- DBF
- CSV and delimited ASCII text files

Relational and spatial databases:

- Oracle®
- Microsoft® SQL Server
- PostGIS
- SQLite
- ODBC compliant databases
- OGC GeoPackage (new in v16.0)

Spatial data:

- AutoCAD® DXF/DWG
- SHP
- DGN
- GML
- KML
- And more

Maps and imagery:

- WMTS (new in v16.0)
- WMS
- WFS (version 2.0 support added)
- CSW
- Aerial images
- Satellite images
- Scanned paper maps
- Microsoft® Bing maps

Critchlow have provided the MapInfo suite of products to New Zealand for more than 25 years.

Contact Critchlow for more information:

www.critchlow.co.nz

info@critchlow.co.nz

+64 4 472 8244

pitney bowes 

CRITCHLOW 

Pitney Bowes, the Corporate logo and MapInfo Pro are trademarks of Pitney Bowes Inc. or a subsidiary. All other trademarks are the property of their respective owners.

© 2016 Pitney Bowes Inc. All rights reserved.

16DCS06874_UK