

WebEOC[®] Mapper Professional

The power of visualisation helps emergency managers make better decisions, faster.

Summary

Through the real-time display of actionable information on a map, WebEOC[®] Mapper Professional is a powerful tool for improving situational awareness.

Benefits

- Understand the big picture, quicker
- Always base decisions on current data
- Users don't need to be GIS specialists
- Seamless integration with WebEOC
- Hierarchy of access defines who sees what

intermedix[®]



CRITCHLOW

Everything that happens,
happens somewhere.
The value is knowing where.

THE CASE

Overview

Emergency managers around the world are successfully using WebEOC plug-in, WebEOC Mapper Professional to support their operations.

Mapper provides a true common operating picture by presenting all information relating to an incident on a simple, easy-to-understand map – all without the need for specialised GIS or mapping expertise.

As the old adage goes “a picture is worth a thousand words”, and through the real-time display of status board data, live weather feeds and other actionable information on a map, Mapper provides emergency managers with improved situational awareness allowing them to make better decisions, faster.

With scores of installations world-wide, Mapper is a proven solution that is trusted by agencies in Australia and around the world. Its configurable interface, secure environment and

simplicity of operation make Mapper the perfect solution for developing a truly common operating picture.

Why WebEOC Mapper?

Mapper is powerful tool for improving situational awareness.

Visualise the situation

With Mapper, emergency managers get a visual, easy-to-understand view of the entire situation.

Mapper provides the ability to view information from any status board – sub-incidents, restricted areas, evacuation routes – live traffic camera feeds and more, in a geographical context. Users can also customise the level of detail seen at any given time.

Always current

Because the map updates automatically as the situation changes, emergency managers always have access to the latest information to enable them to make the best decisions.



Features

- **Direct logins** - login directly to Mapper without having to first log into WebEOC. Or email a direct link to Mapper to VIPs, without having to train them in using WebEOC.
- **Custom map icons** - The ability to fully customise markers makes the map easy to read and interpret.
- **Ability to filter data** - Filtering capability enables the user to only show points from a specific sub-incident or view high level data.
- **Two-way communication** - Inputs from WebEOC are updated automatically and users can "write" to WebEOC from Mapper.
- **User accountability** - Role-based security and audit logs provide complete control over process security.

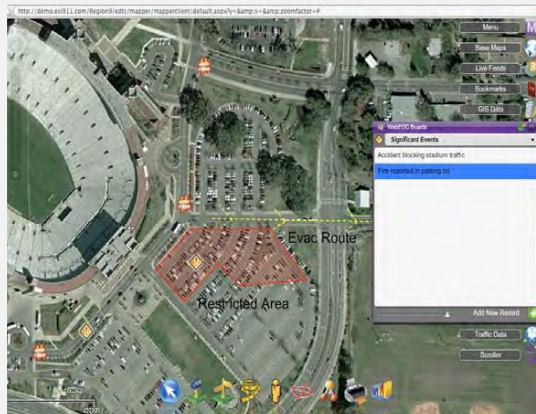


Critchlow Limited

Level 2
22 The Terrace, Wellington 6011
PO Box 4103 Wellington 6140
New Zealand

P: +64 4 472 8244 0800 MAPPING
(0800 627 746)
F: +64 4 472 6695
info@critchlow.co.nz
www.critchlow.co.nz

© 2013. All rights reserved. Critchlow logo is a registered trademark of Critchlow Limited. WebEOC® is a registered trademark of ESI Acquisition Inc., a subsidiary of Intermedix. Intermedix® is a registered trademark of Intermedix Corporation. Trademarks used with permission.



Two-way communication between Mapper and WebEOC ensures that updates to WebEOC are automatically populated in Mapper, and users can also write to WebEOC from Mapper.

All data in one place

Mapper Professional provides a true common operating picture by combining multiple sources of information in one place. Users have access to real-time WebEOC status board entries, GIS data layers and live feeds such as traffic cameras – all within a dynamic map.

Viewing data from multiple WebEOC boards in the context of other map data creates an easy-to-understand common operating picture.

Built for non-GIS specialists

Mapper is a high-powered GIS tool that has been built with non-GIS users in mind. Users do not need to be GIS experts or WebEOC administrators.

A user with appropriate permissions can enter address data (such as street address, building number, place name) or latitude longitude coordinates and simply press a map button to display information geographically.

Backed by world-class service

Critchlow provides full local design, implementation and post go-live support with a 24-hour helpdesk, so clients always have access to assistance when they need it.

Critchlow also has direct access to Intermedix' US-based technical and

development resources. Our team of specialists in New Zealand and Australia offer comprehensive geospatial and integration expertise and we also offer WebEOC administration and hosting services to augment your own resources.

Supporting your organisation to get the best out of your WebEOC investment is at the centre of our business. Regular webinars, newsletters, and an annual forum where we bring together Australian and New Zealand WebEOC users for training and sharing of best practice, are just some of the services we offer.

WebEOC Solution Portfolio

WebEOC® Professional

WebEOC Professional is a web-enabled, user-friendly, and locally-configurable incident and event management system. quickly.

WebEOC® Fusion

WebEOC Fusion enables truly collaborative communication and data sharing. It allows a WebEOC server to communicate with other WebEOC or third-party systems, by acting as the central communications hub.

WebEOC® Mobi

This is a free mobile app that allows you to send a board entry from an iOS mobile device (iPad, iPhone) to a display board in WebEOC.

Specialist Solutions

A full range of plugins are available including Boards Talk, team rostering modules and others.